



http://app.pan.pl/SOM/app69-Prino_etal_SOM.pdf

SUPPLEMENTARY ONLINE MATERIAL FOR

How not to disappear completely: New Stereospondyli fossils from the Rhaetian (Upper Triassic) of Bonenburg (North Rhine-Westphalia) and their implications for the Late Triassic extinction of Stereospondyli

Andrea Prino, Florian Witzmann, Achim H. Schwermann, P. Martin Sander,
Laurent Garbay, and Dorota Konietzko-Meier

Published in *Acta Palaeontologica Polonica* 2024 69 (4): 687–712.
<https://doi.org/10.4202/app.01147.2024>

Supplementary Online Material

SOM 1.

Table 1. Published vertebrate taxa found in Bonenburg, with the respective clade and publication

Figure 1. cf. *Cyclotosaurus* sp., pterygoid WMNM P97556 measurements.

Figure 2. cf. *Cyclotosaurus* sp., humerus WMNM P64371. A₁) dorsal view, A₂) ventral view, A₃) anterior view, A₄) posterior view, A₅) proximal view, A₆) distal view.

Figure 3. cf. *Cyclotosaurus* sp., humerus WMNM P 64371 measurements.

Figure 4. Capitosauroida, dentary WMNM P97559 measurements.

Figure 5. Capitosauroida, angular WMNM P97557 measurements.

Figure 6. Capitosauroida, clavicle WMNM P97791 measurements.

Figure 7. Capitosauroida, fragment of interclavicle WMNM P98583 measurements

Figure 8. Capitosauroida, femur WMNM P97553 measurements.

Figure 9. Capitosauroida, femur WMNM P97790 measurements.

Figure 10. Plagiosaurinae, parietal WMNM P97470 measurements.

Figure 11. Plagiosaurinae, interclavicle WMNM 97554 measurements.

Figure 12. Dermal bone SMNS 91479, identified as *Mastodonsaurus* sp. and found in the Rhaetian bonebed of Bebenhausen, near Tübingen.

Taxon	Clade	Reference
Last updated on Jan. 12, 2024		
<i>"Hybodus" cloacinus</i>	Hybodontiformes	Sander et al. 2016
<i>Hybodontiformes</i> indet. A, probably pertaining to <i>H. cloacinus</i>	Hybodontiformes	Sander et al. 2016
<i>Lissodus minimus</i>	Hybodontiformes	Sander et al. 2016
<i>Hybodontiformes</i> indet. A, probably pertaining to <i>Lissodus minimus</i>	Hybodontiformes	Sander et al. 2016
<i>Rhomphaiodon minor</i>	Synechodontiformes	Sander et al. 2016
<i>Nemacanthus monilifer</i> , probably pertaining to <i>R. minor</i>	Synechodontiformes	Sander et al. 2016
<i>Saurichthys</i> sp.	Selachii	Sander et al. 2016
<i>Sargodon tomicus</i>	Actinopterygii	Sander et al. 2016
<i>Severnichthys acuminatus</i>	Actinopterygii	Sander et al. 2016
<i>Ceratodus latissimus</i>	Dipnoi	Sander et al. 2016
<i>Mawsoniidae</i> indet. sp. 1	Actinistia	Hartung et al. 2021
<i>Mawsoniidae</i> indet. sp. 2	Actinistia	Hartung et al. 2021
cf. <i>Cyclotosaurus</i>	Temnospondyli	Konietzko-Meier et al. 2018, This paper
<i>Capitosauroides</i> indet.	Temnospondyli	This paper
<i>Plagiosaurinae</i> indet.	Temnospondyli	This paper
cf. <i>Shonisaurus</i>	Ichthyosauria	Sander et al. 2016, Perillo and Sander 2024
<i>Rhaeticosaurus mertensi</i>	Plesiosauria	Wintrich et al. 2017
<i>Plesiosauria</i> indet. sp. A	Plesiosauria	Sander et al. 2016
<i>Plesiosauria</i> indet. sp. B	Plesiosauria	Sander et al. 2016
cf. <i>Diphyodontosaurus</i>	Sphenodonta	Sander et al. 2016
<i>Pachystropheus rhaeticus</i>	Choristodera/Thalattosauria	Sander et al. 2016
<i>Phytosauria</i> indet.	Phytosauria	Sander and Wellnitz 2024
<i>Lepagia gaumensis</i>	Synapsida	Schwermann 2016

Table 1 Published vertebrate taxa found in Bonenburg, with the respective clade and publication



Figure 1 cf. *Cyclotosaurus* sp., pterygoid WMNM P97556 measurements.

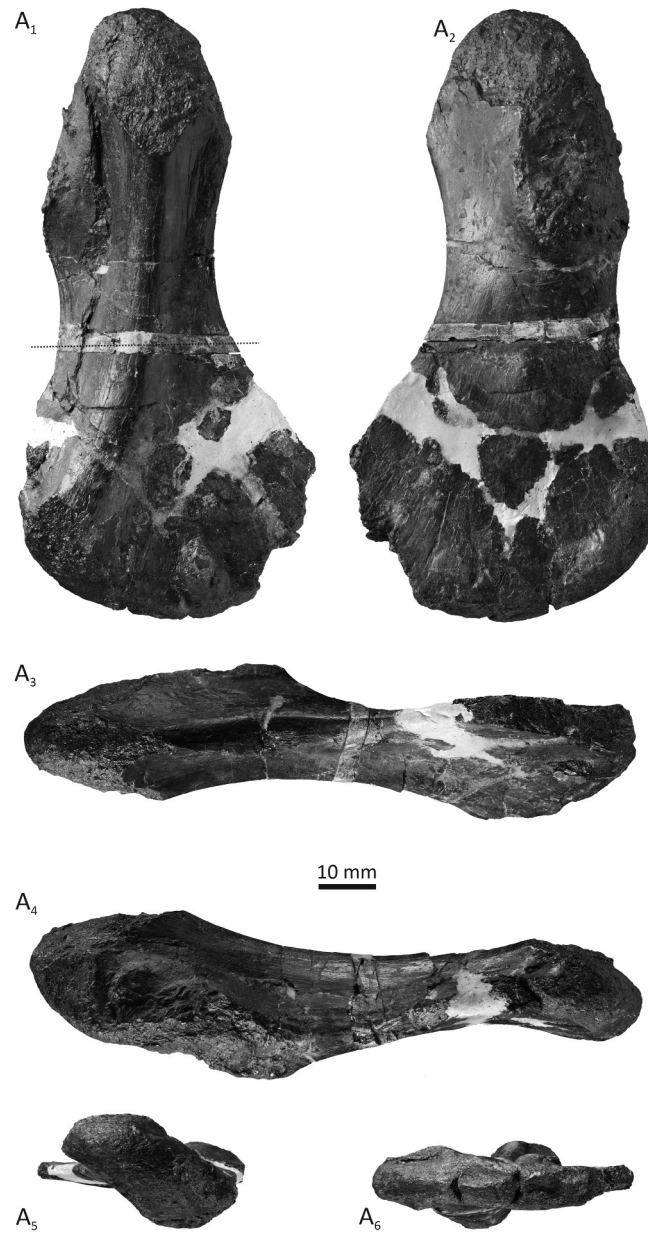


Figure 2 cf. *Cyclotosaurus* sp., humerus WMNM P64371. A₁) dorsal view, A₂) ventral view, A₃) anterior view, A₄) posterior view, A₅) proximal view, A₆) distal view.

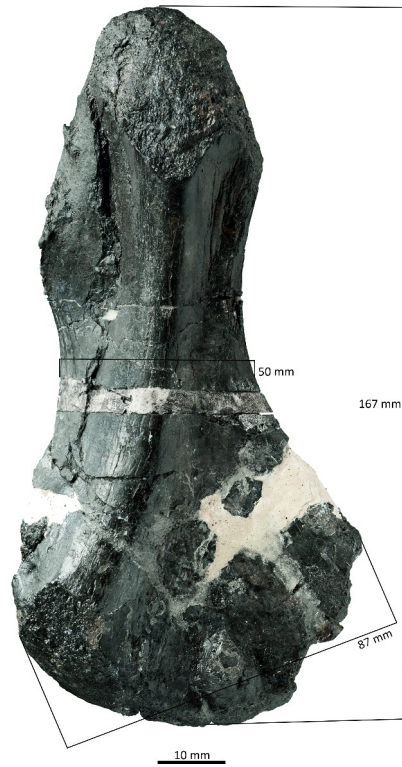


Figure 3 cf *Cyclotosaurus* sp., humerus WMNM P 64371 measurements.

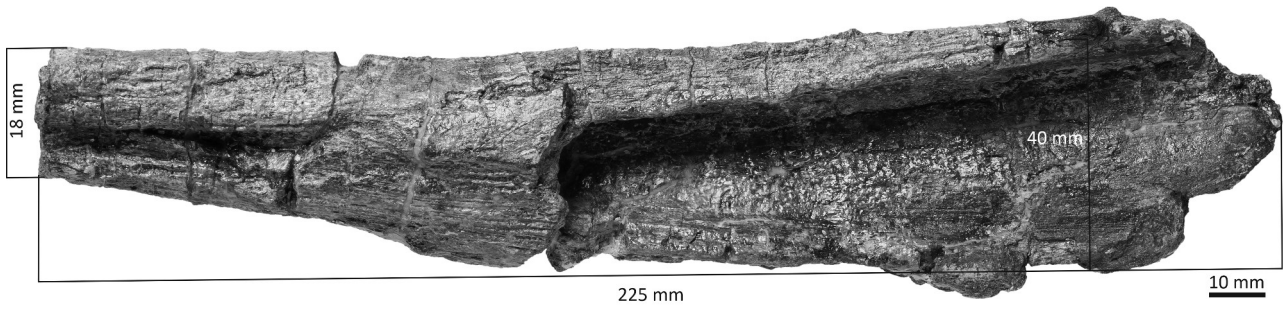


Figure 4 Capitosauroida, dentary WMNM P97559 measurements.

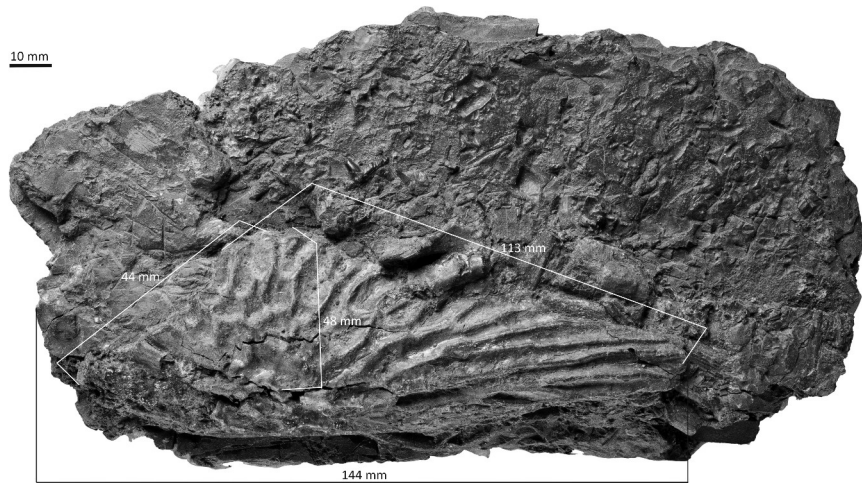


Figure 5 Capitosauroida, angular WMNM P97557 measurements.

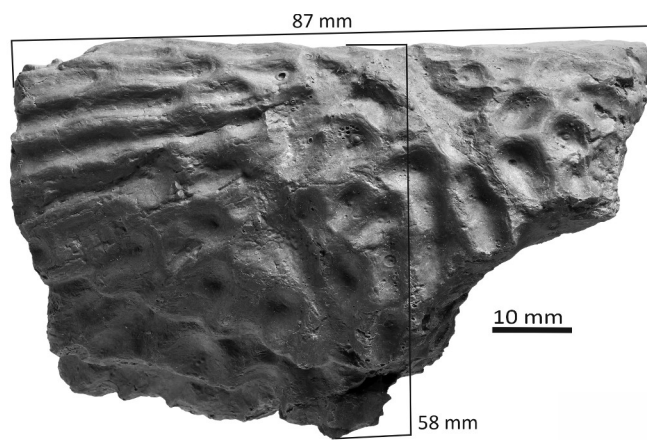


Figure 6 Capitosauroida, clavicle WMNM P97791 measurements.

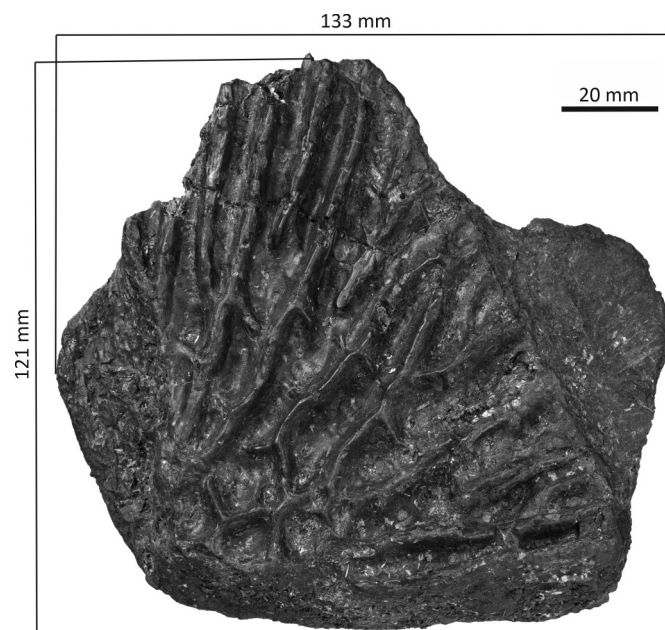


Figure 7 Capitosauroida, fragment of interclavicle WMNM P98583 measurements

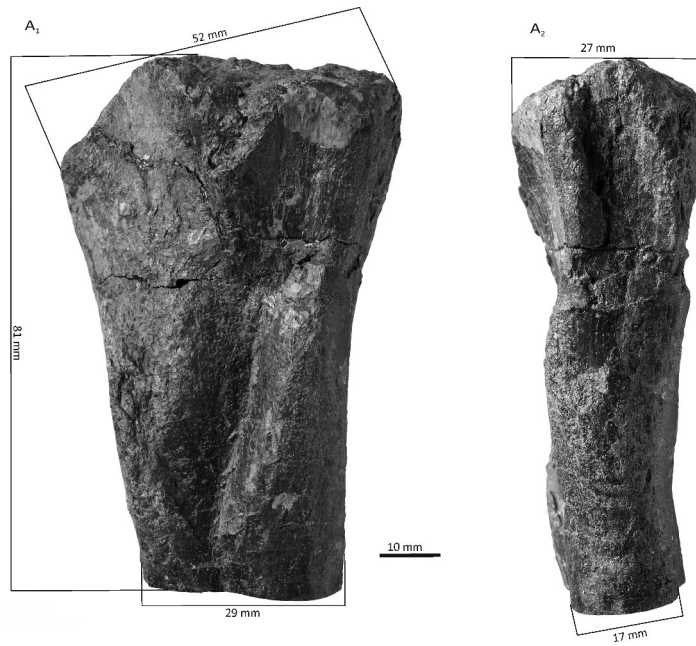


Figure 8 Capitosauroida, femur WMNM P97553 measurements.

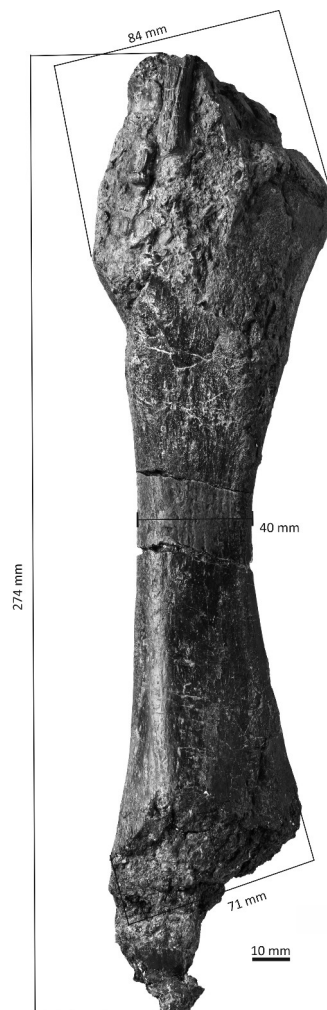


Figure 9 Capitosauroida, femur WMNM P97790 measurements.

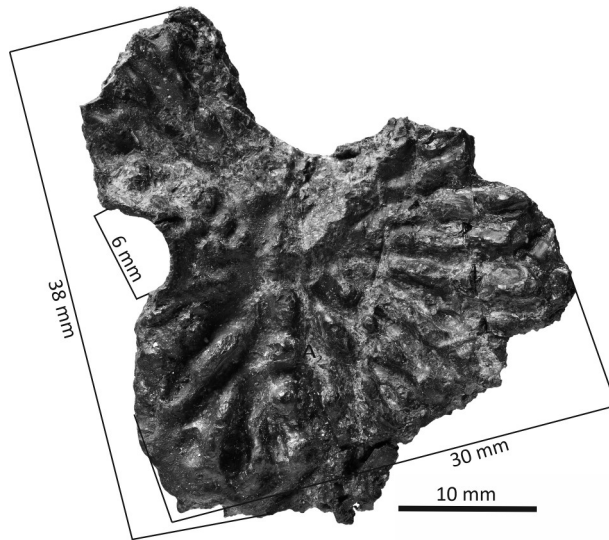


Figure 10 Plagiosaurinae, parietal WMNM P97470 measurements.

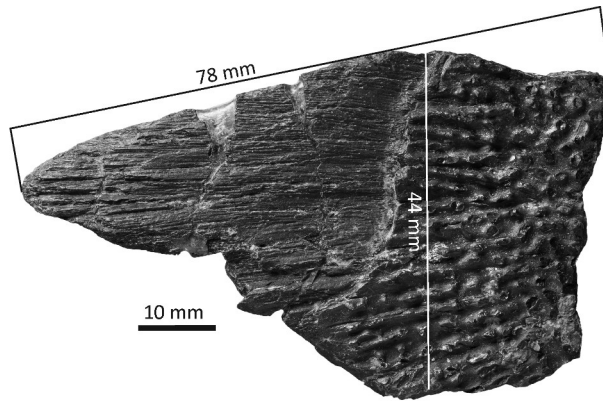


Figure 11 Plagiosaurinae, interclavicle WMNM 97554 measurements.



Figure 12 Dermal bone SMNS 91479, identified as *Mastodonsaurus* sp. and found in the Rhaetian bonebed of Bebenhausen, near Tübingen.